

# HK 42 TPF

AERIAL PLATFORM



**HIDROKON**



*Stability and Performance Together*










# **HK 42 TPF Aerial Platform**

*With high quality equipment,  
superior capability and  
maximum safety features.*





## Technical Specifications

	Total weight*	25000 kg		Rotation angle of the basket boom	110°
	Max. working height	42 m		Rotation angle of the basket	± 90°
	Max. basket height	40 m		Size of the basket	850x1100x2000 mm
	Max. outreach	28,50 m		Max. basket load	500 kg
	Rotation angle of turntable	± 270°	*It Varies Depending On The Vehicle Type.		

### BASIC SPECIFICATIONS

ENGINE START/STOP IN CABIN	STANDARD
RAMPING ON MOVEMENT START AND STOP	STANDARD

### BASKET

ENGINE START/STOP IN THE BASKET	STANDARD
220 V AC OUTLET	STANDARD
OVERLOAD CONTROL ON BASKET	STANDARD
LIGHTENING	STANDARD

### BOOMS

MAINBOOM ANGLE	85 °
LENGTH AND ANGLE CONTROL OF BOOMS	STANDARD

### SLEWING

SLEWING ANGLE CONTROL	STANDARD
SLEWING WITHIN THE VIEW OF THE SIDE MIRRORS	STANDARD

### OUTRIGGERS

TWO OUTRIGGERS ON EACH SIDE	STANDARD
VERTICAL JACKING CONTROL	STANDARD
MAXIMUM PERMISSIBLE INCLINATION	3 °

### OPTIONAL SPECIFICATIONS

TWO SECTION EXTENDABLE BASKET	OPTIONAL
BODY BY ALUMINIUM COVER	OPTIONAL
STABILIZER PADS	OPTIONAL

## FEATURES



Operator  
Cabin



Operator  
Cabin  
Heating



Operator  
Cabin A/C



Operator  
Cabin  
(Tilttable)



Slewing Angle  
Control



Hand Pump



Intercom  
Easytalk



Wind  
Sensor



Proportional  
Control Valve



Joystick  
Control  
(Cabled)



Cabin  
Display  
Screen



Geometric  
Control  
System



Extendable  
Basket



Basket  
Electrical  
Insulation



Basket  
Overload  
Control



Automatic  
Outrigger  
Leveling

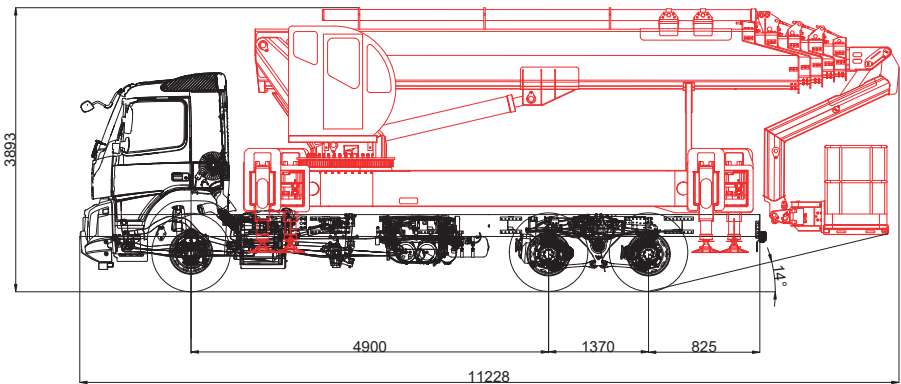


Outrigger  
Control  
System

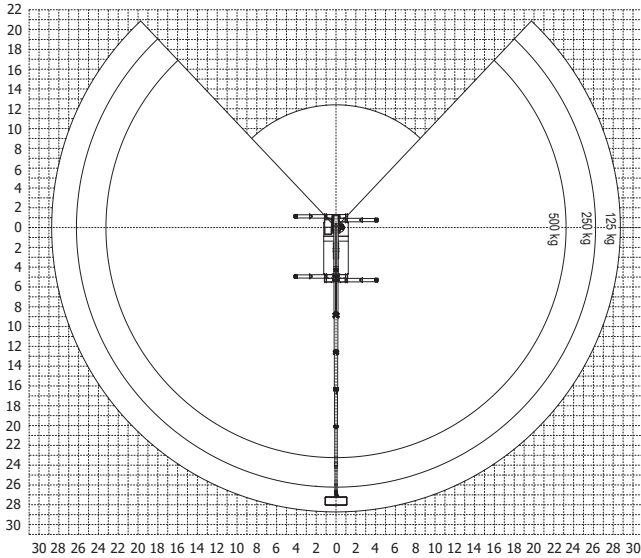
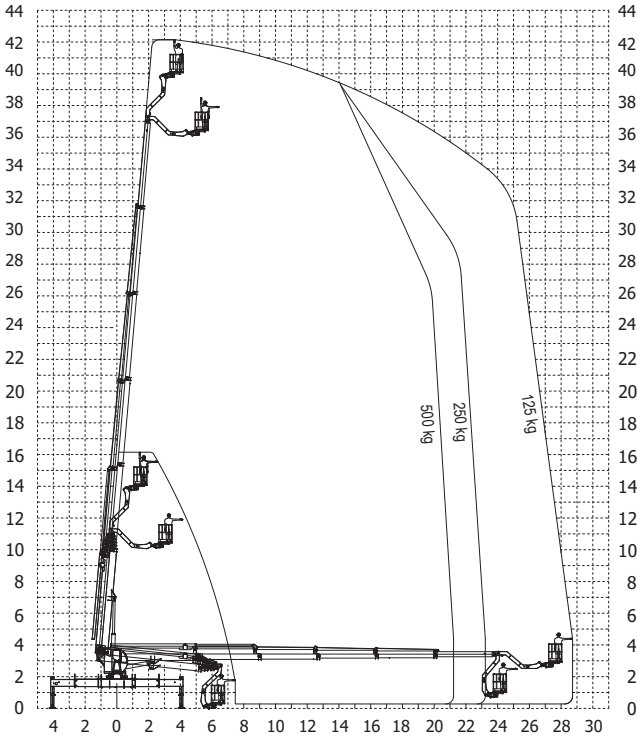


Variable  
Displacement  
Pump

## Dimensions (mm)



# HK 42 TPF Working Diagrams



**\*Boom deflections are not taken into consideration**